

Product List

- ① Lamps
- ② Color box
- ③ Accessories
- ④ Manual

① lamps



② Color box



③ Accessories

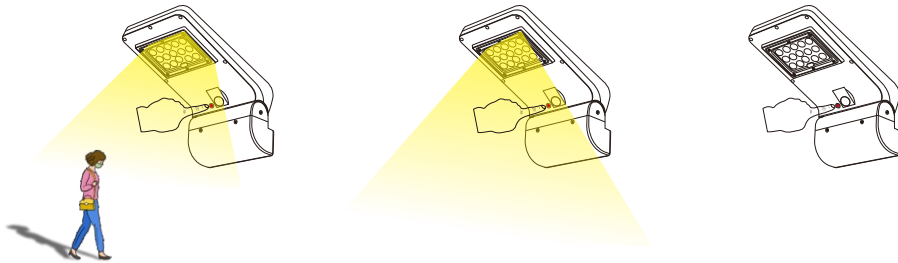


④ Manual



⏻ SWITCH CONTROL MODE

- Press the switch button once (PIR motion sensor)
- Press the switch button twice (constant mode)
- Press the switch button three times (turn off)



CIRCUIT DETECTION STEPS FOR LAMPS NOT WORKING

Steps

1. Dearest receive When lighting Test the light first
Guaranteed Lighting can light up normally re-install
2. Please be dark at night or use something completely covered Solar panel test light

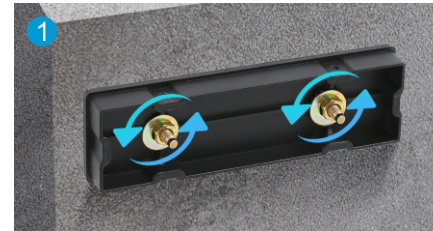


Paper cover



Dark test light

INSTALLATION STEPS



- ① As shown in Figure 1, fix the bracket with two expansion screws at the position where the lamp needs to be installed
- ② Put the lamp into the bracket, and use a screwdriver to tighten the two screws on the side to quickly complete the installation



- ③ Press the black switch, click first: PIR sensor, click twice: Constant bright, click three: Turn off. Need to turn on the switch, it will work automatically when it is dark.
- ④ The effect of installation completion



★ PRECAUTIONS

- Please pay attention to fixing lamps so as not to hurt people when the wind blows.
- In order not to affect the use of lights, clean up the dust and dirt on the surface of the solar panels every 3 months.
- Please check regularly whether the thread has come off or broken.
- Solar powered lamps contain batteries. Batteries are recyclables. Please do not litter.

